

TEST - 1 ÇÖZÜMLER

1.

A	B	C	D
90°	60°	30°	180°
3	2	1	6

→ 30° ile sadeleştirilirse

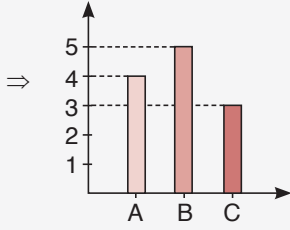
$$\Rightarrow A : B : C : D = 3 : 2 : 1 : 6$$

Cevap: D

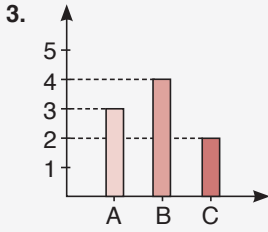
2.

A	B	C
120°	150°	90°
4	5	3

→ 30° ile sadeleştirilirse



Cevap: D



$$A = 3k$$

$$B = 4k \Rightarrow 3k + 4k + 2k = 360^\circ$$

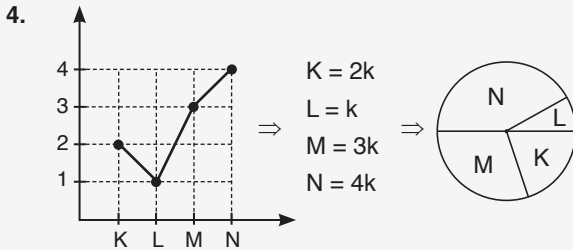
$$C = 2k$$

$$9k = 360^\circ$$

$$k = 40^\circ$$

$$\Rightarrow x = 2k = 2 \cdot 40^\circ = 80^\circ$$

Cevap: B

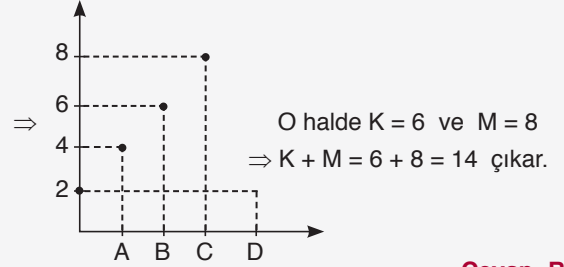


Cevap: E

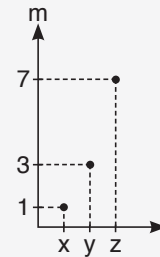
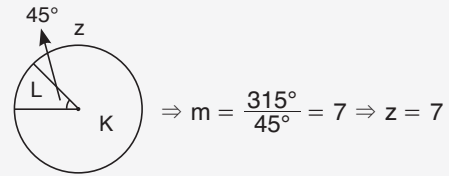
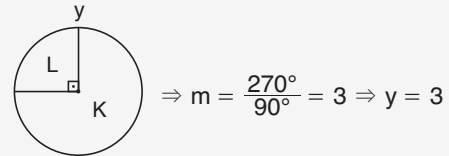
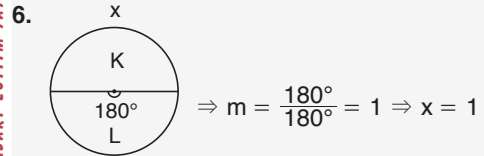
5.

A	B	C	D
72°	108°	144°	36°
4	6	8	2

→ 18° ile sadeleştirilirse



Cevap: B



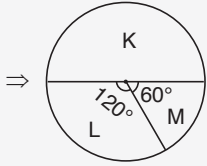
Cevap: D

TEST - 1 ÇÖZÜMLER

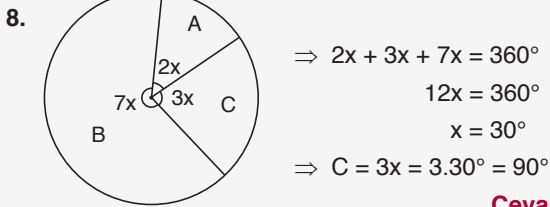
7.

	K	L	M	
III.	9	6	3	$\Rightarrow K = 9k$ $L = 6k$ $M = 3k$

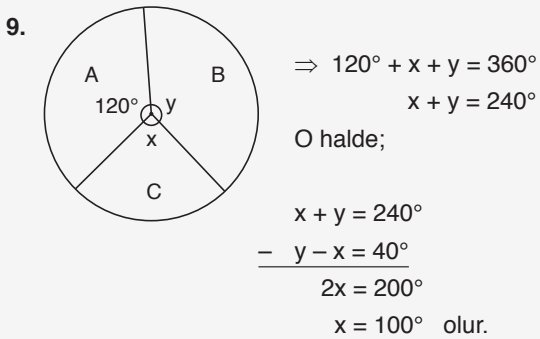
$$\begin{aligned} \Rightarrow 9k + 6k + 3k &= 360^\circ \\ 18k &= 360^\circ \\ k &= 20^\circ \end{aligned}$$



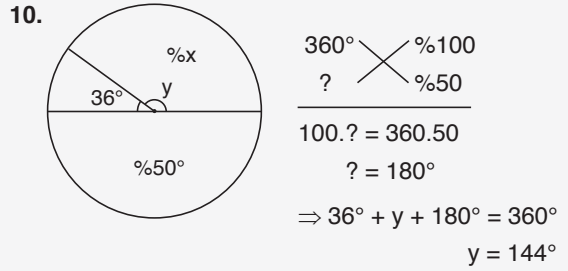
Cevap: A



Cevap: B



Cevap: D



O halde;

$$\begin{aligned} 360^\circ &\times \frac{\%100}{\%x} \\ 144^\circ &= \frac{360 \cdot 100}{x} \\ 100 \cdot 144 &= \frac{360 \cdot x}{5} \\ 200 &= 5x \\ x &= 40 \end{aligned}$$

Cevap: E

11.

A	B	C	
4	6	2	$\Rightarrow A = 4k$ $B = 6k$ $C = 2k$

$$\begin{aligned} \Rightarrow 4k + 6k + 2k &= 360^\circ \\ 12k &= 360^\circ \\ k &= 30^\circ \end{aligned}$$

O halde;

$$\begin{aligned} A &= 4x - 40^\circ = 4k \\ 4x - 40^\circ &= 4 \cdot 30^\circ \\ 4x - 40^\circ &= 120^\circ \\ 4x &= 160^\circ \\ x &= 40^\circ \end{aligned}$$

Cevap: C

12. $3x = 4y \Rightarrow x = 4k$ ve $y = 3k$
 $3x = 4z \Rightarrow x = 4k$ ve $z = 3k$
 $\Rightarrow x + y + z = 360^\circ$
 $4k + 3k + 3k = 360^\circ$
 $10k = 360^\circ$
 $k = 36^\circ$
 $\Rightarrow x = \alpha = 4k = 4 \cdot 36^\circ = 144^\circ$

Cevap: D

TEST - 2 ÇÖZÜMLER

1.

x_1	x_2	x_3	x_4
30	50	60	40

$$\rightarrow (x_2 - x_4) \cdot (x_3 - x_1) = (50 - 40) \cdot (60 - 30) \\ = 10 \cdot 30 = 300$$

Cevap: D

2.

	x_1	x_2	x_3	x_4
A	50	60	40	70
B	30	50	60	20

$$x_1A - x_2B - x_3B + x_4A = 50 - 50 - 60 + 70 = 10$$

Cevap: B

3.

K	x_1	x_2	x_3	L	x_1	x_2	x_3
	20	50	40		30	20	30

$$\Rightarrow \begin{array}{|c|c|c|c|} \hline K+L & x_1 & x_2 & x_3 \\ \hline & 50 & 70 & 70 \\ \hline \end{array}$$

Cevap: A

4.

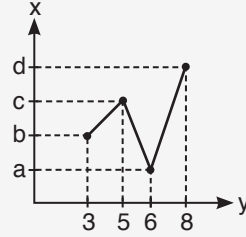
K	L	M	N
4	0	2	3

$$\rightarrow L \cdot (K + M + N) = 0 \cdot (4 + 2 + 3) = 0 \cdot 9 = 0$$

Cevap: A

5.

a	b	c	d	\Rightarrow	3	5	6	8
6	3	5	8		b	c	a	d



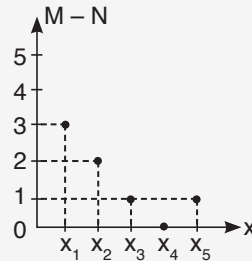
Cevap: D

6.

M	x_1	x_2	x_3	x_4	x_5
	5	3	2	1	4

N	x_1	x_2	x_3	x_4	x_5
	2	1	1	1	3

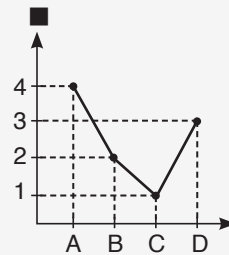
$$\Rightarrow \begin{array}{|c|c|c|c|c|c|} \hline M-N & x_1 & x_2 & x_3 & x_4 & x_5 \\ \hline & 3 & 2 & 1 & 0 & 1 \\ \hline \end{array}$$



Cevap: A

7.

■	1	2	3	4
	C	B	D	A



Cevap: B

TEST - 2 ÇÖZÜMLER



⇒

?	A	B	C	D	E	F
	1	2	0	1	0	2

⇒

A	B	C	D	E	F
	a				a
					a
			a		
a					
	a				

⇒ a

↓ ↓ ↓ ↓ ↓ ↓

1 2 0 1 0 2

Cevap: A

9. I.

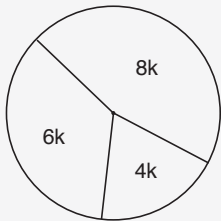
K	L	M
5	3	4

II.

x	y	z
1	3	2

⇒

K+y	L+x	M+z
8	4	6



$$\begin{aligned} \Rightarrow 8k + 4k + 6k &= 360^\circ \\ 18k &= 360^\circ \\ k &= 20^\circ \\ K + y = 8k &= 8 \cdot 20^\circ = 160^\circ \end{aligned}$$

Cevap: D

$$10. C = \frac{2}{5} \Rightarrow \frac{2}{5} \cdot 360^\circ = 144^\circ$$

$$A = \frac{11}{40} \Rightarrow \frac{11}{40} \cdot 360^\circ = 99^\circ$$

$$\text{O halde; } A + C + \alpha + \beta = 360^\circ$$

$$144^\circ + 99^\circ + \alpha + \beta = 360^\circ$$

$$\alpha + \beta = 117^\circ$$

$$\alpha + \beta = 117^\circ$$

$$+ \alpha - \beta = 73$$

$$2\alpha = 190^\circ$$

$$\alpha = 95^\circ$$

Cevap: C

$$11. 108^\circ + 36^\circ + 72^\circ + L = 360^\circ \quad L = 144^\circ$$

$$\Rightarrow K = 108^\circ \Rightarrow \frac{108^\circ}{360^\circ} = \frac{3}{10}$$

$$L = 144^\circ \Rightarrow \frac{144^\circ}{360^\circ} = \frac{2}{5}$$

$$M = 36^\circ \Rightarrow \frac{36^\circ}{360^\circ} = \frac{1}{10}$$

$$N = 72^\circ \Rightarrow \frac{72^\circ}{360^\circ} = \frac{1}{5}$$

Cevap: E

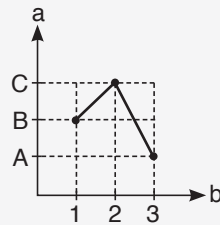
12. II.

A	B	C
3	1	2

⇒

1	2	3
B	C	A

O halde;



Cevap: D

TEST - 3 ÇÖZÜMLER

1.

x	1	2	3	...	50
y	4	6	8	...	?

$$1 \rightarrow ① \cdot 2 + 2 = 4$$

$$2 \rightarrow ② \cdot 2 + 2 = 6$$

$$3 \rightarrow ③ \cdot 2 + 2 = 8$$

$$\Rightarrow 50 \rightarrow ⑤① \cdot 2 + 2 = 102$$

Cevap: E

2.

x	1	2	3	4	...	15
y	0	-8	-16	-24	...	?

$$1 \rightarrow 0 - 8 = 0$$

$$2 \rightarrow 1 - 8 = -8$$

$$3 \rightarrow 2 - 8 = -16$$

$$4 \rightarrow 3 - 8 = -24$$

$$\Rightarrow 15 \rightarrow 14 - 8 = -112$$

Cevap: C

3. $P_1 \Rightarrow$

x	1	2	3	...	15
y	2	3	4	...	?

$$1 \rightarrow ① + 1 = 2$$

$$2 \rightarrow ② + 1 = 3$$

$$3 \rightarrow ③ + 1 = 4$$

$$\Rightarrow 15 \rightarrow ①⑤ + 1 = 16$$

$$y_1 = 16$$

$P_2 \Rightarrow$

x	2	3	4	...	15
y	0	1	2	...	?

$$2 \rightarrow ② - 2 = 0$$

$$3 \rightarrow ③ - 2 = 1$$

$$4 \rightarrow ④ - 2 = 2$$

$$\Rightarrow 15 \rightarrow ①⑤ - 2 = 13$$

$$y_2 = 13$$

$$O \text{ halde; } y_1 + y_2 = 16 + 13 = 29$$

Cevap: B

4.

x	2	3	4	...	14
y	3	8	15	...	?

$$2 \rightarrow ②^2 - 1 = 3$$

$$3 \rightarrow ③^2 - 1 = 8$$

$$4 \rightarrow ④^2 - 1 = 15$$

$$\Rightarrow 14 \rightarrow ①④^2 - 1 = 195$$

Cevap: E

5.

a	2	4	6	...	23
b	12	24	36	...	?

$$2 \rightarrow ② \cdot 6 = 12$$

$$4 \rightarrow ④ \cdot 6 = 24$$

$$6 \rightarrow ⑥ \cdot 6 = 36$$

$$\Rightarrow 23 \rightarrow ②③ \cdot 6 = 138$$

Cevap: A

6.

a	a_1	a_2	a_3
b	5	10	17

ve

a	a_1	a_2	a_3
c	9	24	45

$$\Rightarrow$$

b	5	10	17	...	21
c	9	24	45	...	?

$$5 \rightarrow ⑤ \cdot 3 - 6 = 9$$

$$10 \rightarrow ⑩ \cdot 3 - 6 = 24$$

$$17 \rightarrow ⑰ \cdot 3 - 6 = 45$$

$$\Rightarrow 21 \rightarrow ⑰ \cdot 3 - 6 = 57$$

Cevap: C

TEST - 3 ÇÖZÜMLER

7. L →

A	B	C	D	E	F	G
5	8	1	3	2	3	1

K →

A	B	C	D	E	F	G
10	8	4	6	10	9	3

⇒ M = $\frac{K}{L}$

A	B	C	D	E	F	G
---	---	---	---	---	---	---

↓ ↓ ↓ ↓ ↓ ↓ ↓

$\frac{8}{8} = 1$ $\frac{6}{3} = 2$ $\frac{9}{3} = 3$

$\frac{10}{5} = 2$ $\frac{4}{1} = 4$ $\frac{10}{2} = 5$ $\frac{3}{1} = 3$

Cevap: B

8. A → $\frac{40}{100} \cdot 360^\circ = 144^\circ$

B → $\frac{30}{100} \cdot 360^\circ = 108^\circ$

C → $\frac{20}{100} \cdot 360^\circ = 72^\circ$

D → $\frac{10}{100} \cdot 360^\circ = 36^\circ$

⇒ $144^\circ, 108^\circ, 72^\circ, 36^\circ$

Cevap: A

9. A ↔ C

K	L	M	N
6	2	8	6

B ↔ D

x	y	z	p
4	6	2	2

⇒

K + x	M + y	L + p	N + z
10	14	4	8

$10k + 14k + 4k + 8k = 360^\circ$

$36k = 360^\circ$

$k = 10^\circ$

⇒ $K + x = \alpha = 10k = 10 \cdot 10^\circ = 100^\circ$

Cevap: D

10. I. $a = 45^\circ$ $b = 360^\circ - 45^\circ = 315^\circ$
 ⇒ $x = b - a = 315^\circ - 45^\circ = 270^\circ$

II. $a = 90^\circ$ $b = 360^\circ - 90^\circ = 270^\circ$
 ⇒ $y = b - a = 270^\circ - 90^\circ = 180^\circ$

III. $a = 60^\circ$ $b = 360^\circ - 60^\circ = 300^\circ$
 ⇒ $z = b - a = 300^\circ - 60^\circ = 240^\circ$

$x + y - z = 270^\circ + 180^\circ - 240^\circ = 210^\circ$

Cevap: D

11.

x	y	z	m	n	p
5	8	6	7	4	2

$5k + 8k + 6k + 7k + 4k + 2k = 640$

$32k = 640$

$k = 20$

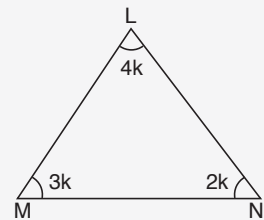
⇒ $m = 7k = 7 \cdot 20 = 140$

Cevap: D

12.

L	M	N
4	3	2

⇒



Üçgenin iç açıları toplamı 180° dir.

O halde; $4k + 3k + 2k = 9k = 180^\circ$

$k = 20^\circ$

⇒ $L - N + M = 4k - 2k + 3k = 5k = 5 \cdot 20^\circ = 100^\circ$

Cevap: A