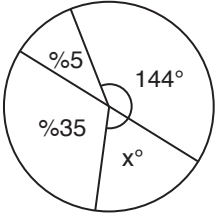


1.

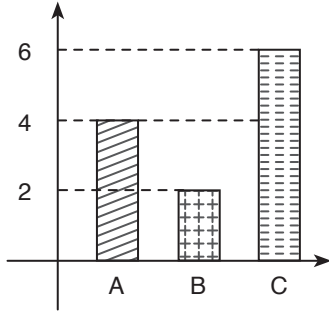


$$180 - 144 = 36^\circ \quad \%50 - \%35 = \%15$$

$$\begin{array}{r} \%5 \quad 36^\circ \\ \%15 \quad x^\circ \\ \hline x^\circ = 108^\circ \end{array}$$

Cevap: E

2.



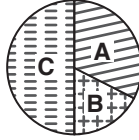
$$A + B + C = 4 + 2 + 6 = 12 \text{ bu toplam } 360^\circ \text{ye eşit}$$

$$1 \text{ parça } \frac{360}{12} = 30^\circ \text{ olur.}$$

$$A \xrightarrow{4 \text{ parça}} 120^\circ$$

$$B \xrightarrow{2 \text{ parça}} 60^\circ$$

$$C \xrightarrow{6 \text{ parça}} 180^\circ$$



Cevap: B

3. İşçi 4 parçaya ayırmak için 3 kesim yapar.  
5 parçaya ayırmak için 4 kesim yapar.

3 kesim için	12 dk
4 kesim için	x
3.x 4.12	
x = 16 dakika	

Cevap: C

4. MHGRSYMHGRSYMHGRSY...

6 harfte bir tekrarlanmakta yani mod6 demektir.

$$\begin{array}{r} 142 \quad | \quad 6 \\ - 12 \quad | \quad 23 \\ \hline 22 \\ - 18 \\ \hline \text{Kalan} = 4 \end{array}$$

...MHGRSYMHG<sup>®</sup>

↓                      ↓  
 138.                 142. harf

Cevap: D

5.  $\alpha = \left| \frac{11.\text{dakika} - 60.\text{saat}}{2} \right|$

Saat: 10

dakika: 15  $\alpha = \left| \frac{11.15 - 60.10}{2} \right|$

$$\alpha = \left| \frac{165 - 600}{2} \right|$$

$$\alpha = 217,5 \text{ (Büyük açı)}$$

$$\begin{aligned} \text{Küçük açı} &= 360 - 217,5 \\ &= 142,5 \end{aligned}$$

Cevap: B

6.

941

$$\begin{array}{ccc} \downarrow & \downarrow & \downarrow \\ 6 & + & 4 + 2 = 12 \text{ çizgi} \end{array}$$

Cevap: D

7.  $A(1) = 1 \rightarrow 2^0$

$$A(11) = 2 \rightarrow 2^1$$

$$A(111) = 4 \rightarrow 2^2 \text{ (Kuvvet parantezi içindeki 1 sayısının bir eksiği)}$$

⋮

$$A(\underbrace{111\dots 1}_x) = 512$$

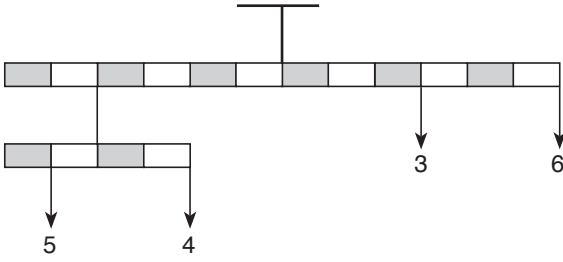
x

$$2^{x-1} = 2^9$$

$$x - 1 = 9 \Rightarrow x = 10$$

Cevap: E

8.

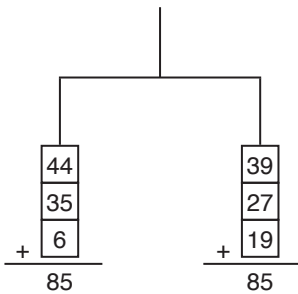


Cevap: A

9. 112123123412345123...56123...67123...78123...89123...  
10123...1011123...101112123...10111213  
26 tane 1 rakamı vardır.

Cevap: C

10.



O halde 12 sayısına ihtiyaç yoktur.

Cevap: B

$$11. \boxed{X} \boxed{Y} * \boxed{Z} \boxed{t} = x.z - \frac{y}{z} - t^2$$

$$\begin{aligned} \boxed{2} \boxed{4} * \boxed{5} \boxed{1} &= 2.5 - \frac{4}{2} - 1^2 \\ &= 10 - 2 - 1 \\ &= 7 \end{aligned}$$

Cevap: C

$$12. \boxed{X} \boxed{Y} * \boxed{Z} \boxed{t} = x.z - \frac{y}{2} - t^2$$

$$\begin{aligned} \boxed{4} \boxed{6} * \boxed{x} \boxed{2} &= 4.x - \frac{6}{2} - 2^2 = 9 \\ \Rightarrow 4x - 3 - 4 &= 9 \\ 4x &= 9 + 7 \\ 4x &= 16 \\ x &= 4 \end{aligned}$$

Cevap: B

$$13. \boxed{X} \boxed{4} * \boxed{Y} \boxed{4} = 6$$

$$x.y - \frac{4}{2} - 4^2 = 6$$

$$x.y - 2 - 16 = 6$$

$$x . y = 6 + 18 = 24$$

$$\begin{array}{c} \downarrow \downarrow \\ 4 \quad 6 \end{array}$$

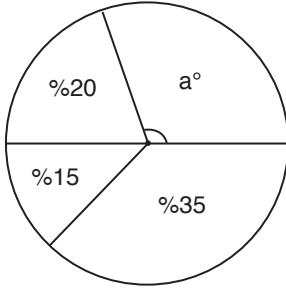
$$3 \quad 8$$

$$x + y = 3 + 8 = 11$$

x ve y'nin rakam olduğunu unutma

Cevap: D

14.



$$\Rightarrow a = \%30 -$$

$$\%100 \quad 360^\circ$$

$$\%30 \quad a$$

$$a = \frac{360 \cdot 30}{100} = 108^\circ \text{ bulunur.}$$

Cevap: C

$$15. \begin{array}{cccccccccccc} 7 & 5 & 4 & 3 & 1 & 2 & 8 & 7 & 5 & 4 & 3 & 1 & 2 & 8 & \dots \\ \hline 1 & 2 & 3 & 4 & 5 & 6 & 7 & & & & & & & & \end{array}$$

7 rakamda bir tekrar başa dönmekte.

$$\begin{array}{r} 132 \overline{) 7} \\ - 7 \phantom{00} \\ \hline 62 \\ - 56 \\ \hline \text{Kalan} = 6 \end{array}$$

O halde 6. rakam 2

Cevap: D

$$16. (371, 53),$$

$$\downarrow$$

$$\frac{371}{53} = 7$$

$$(133, 19),$$

$$\downarrow$$

$$\frac{133}{19} = 7$$

$$(70, A)$$

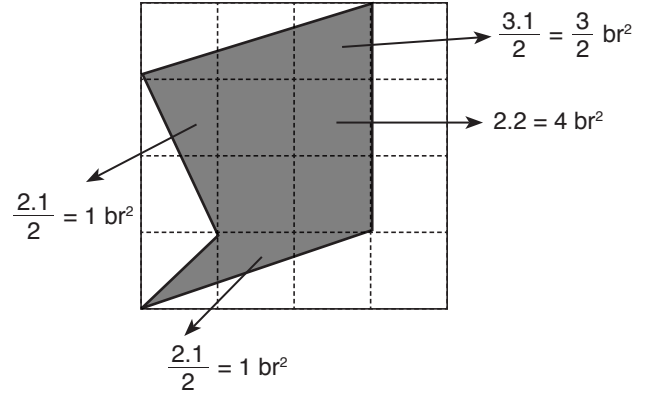
$$\downarrow$$

$$\frac{70}{A} = 7$$

$$\Rightarrow A = \frac{70}{7} = 10$$

Cevap: C

17.



O halde toplam taralı alan

$$1 + 1 + 4 + \frac{3}{2} = 6 + \frac{3}{2} = \frac{15}{2} \text{ br}^2$$

Cevap: A

$$16. (371, 53),$$

$$\downarrow$$

$$\frac{371}{53} = 7$$

$$(133, 19),$$

$$\downarrow$$

$$\frac{133}{19} = 7$$

$$(70, A)$$

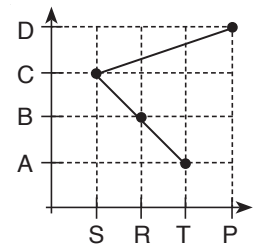
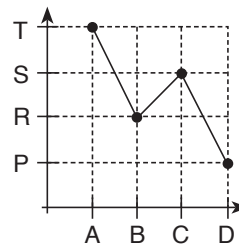
$$\downarrow$$

$$\frac{70}{A} = 7$$

$$\Rightarrow A = \frac{70}{7} = 10$$

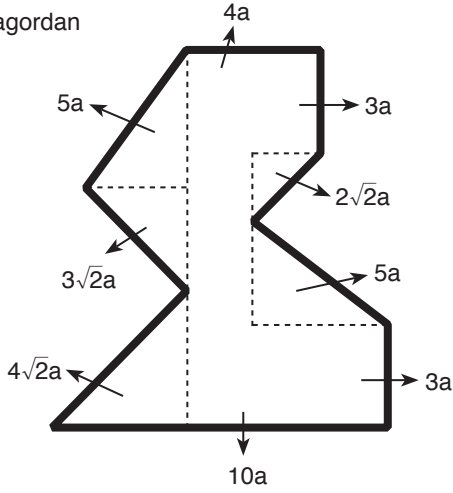
Cevap: C

18.



Cevap: D

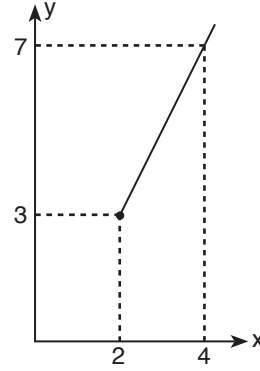
19. Pisagordan



$$\begin{aligned} \text{Ç} &= 5a + 3\sqrt{2}a + 4\sqrt{2}a + 10a + 3a + 5a + 22a + 3a + 4a \\ \text{Ç} &= (30 + 9\sqrt{2})a \end{aligned}$$

Cevap: E

20.



$$\begin{aligned} x &= 23, \\ y &= B, \\ \Rightarrow A &= \%? \end{aligned}$$

x	y
2	3
4	7
6	11
⋮	⋮
22	43
23	45

$$Y = B = 45^\circ$$

$$A + 27^\circ + 45^\circ = 180^\circ$$

$$A = 108^\circ$$

%10	360°
%x	108°

$$x = \frac{100 \cdot 108}{360} = 30$$

Cevap: A