

1. Kare sayıları verilmiş  
Kare sayısı şeklimizde 15 tane

Cevap: B

2. Tek Çift
- |        |         |
|--------|---------|
| 3 x 3  | 4 x 4   |
| ● x 5  | ● x 8   |
| 5 x 5  | b x 6   |
| ● x 9  | ● x 12  |
| 7 x 7  | 8 x 8   |
| ● x 13 | ● x 16  |
| 9 x 9  | 10 x 10 |
| ● x 17 | ● x 20  |
- n = 20

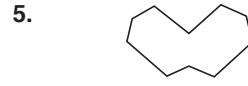
Cevap: A

- 3.
- 

Cevap: C

4. Karesayısı, Daire sayısı, Kum saati sayısı, Üçgen sayısı  
3,2,1,1

Cevap: A



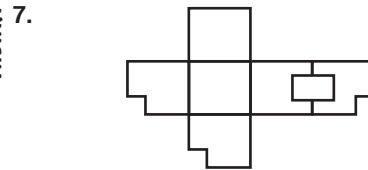
Cevap: D

6. Sol şeklin beyazları sağ şekilde siyah



Cevap: B

TASARI EĞİTİM YAYINLARI



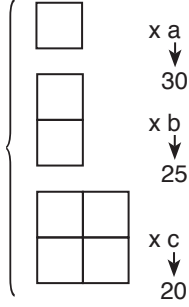
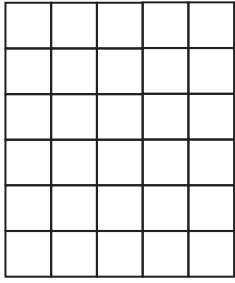
Cevap: E

- 8.
- 

$$a + b + c = 27 + 13 + 13 = 53$$

Cevap: D

9.



6 x 5

1 x 1

↓  
30

5 x 4

2 x 2

↓  
20

4 x 3

3 x 3

↓  
12

3 x 2

4 x 4

↓  
6

2 x 1

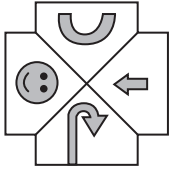
5 x 5

↓  
2

$$a + b + c = 30 + 25 + 20 = 75$$

Cevap: C

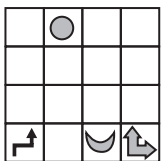
10.



Şekil sola doğru çevrilmekte

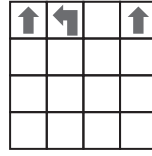
Cevap: E

11.



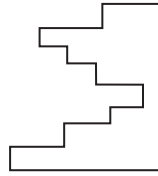
Cevap: C

12.



Cevap: E

13.



Kareyi tamamlayan şekil

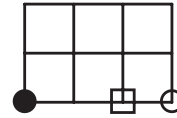
Cevap: C

14.

● → sağa iki adım

□ → sola bir adım

○ → sağa üç adım



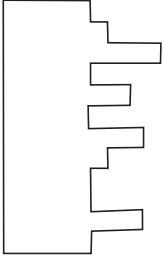
Cevap: D

15.



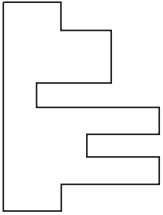
Cevap: B

16.



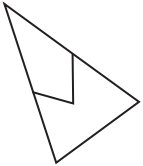
Cevap: B

17.



Cevap: B

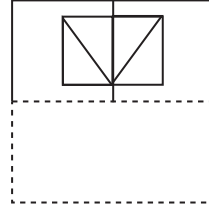
18.



Tam karşısındaki şekil olmalı

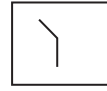
Cevap: D

19.



Cevap: A

20.



İkinci kesik çizgi soldan sağa doğru 45°lik açı ile açılmakta.

Cevap: D